

ΣΕΙΣΜΟΣ ΛΗΜΝΟΥ

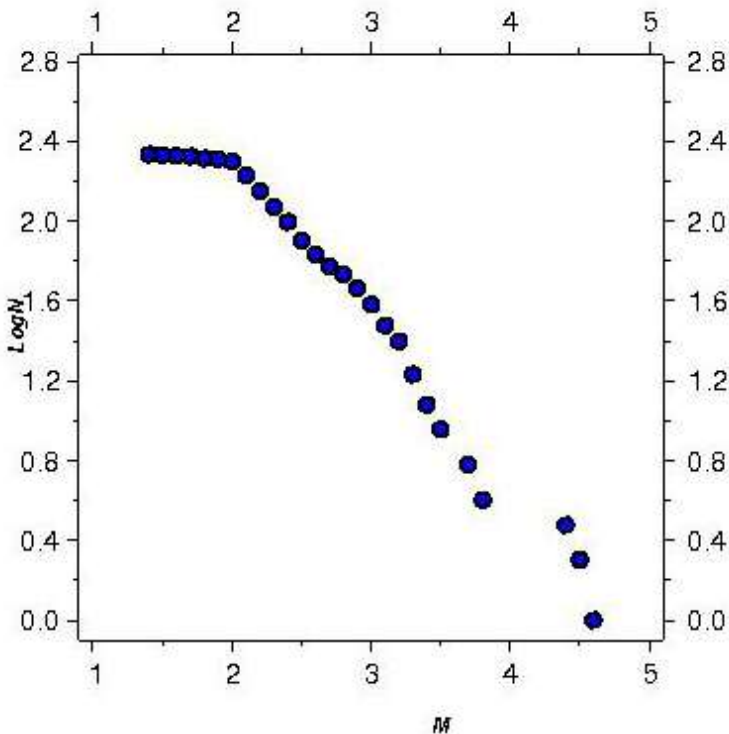
(08/01/2013, 14:16 GMT, M=5.9)

Έπειτα από την τελευταία ενημέρωση (Last event : 14/01/2013, 18:43:35 GMT) του καταλόγου της ακολουθίας του σεισμού της Λήμνου προέκυψαν τα ακόλουθα:

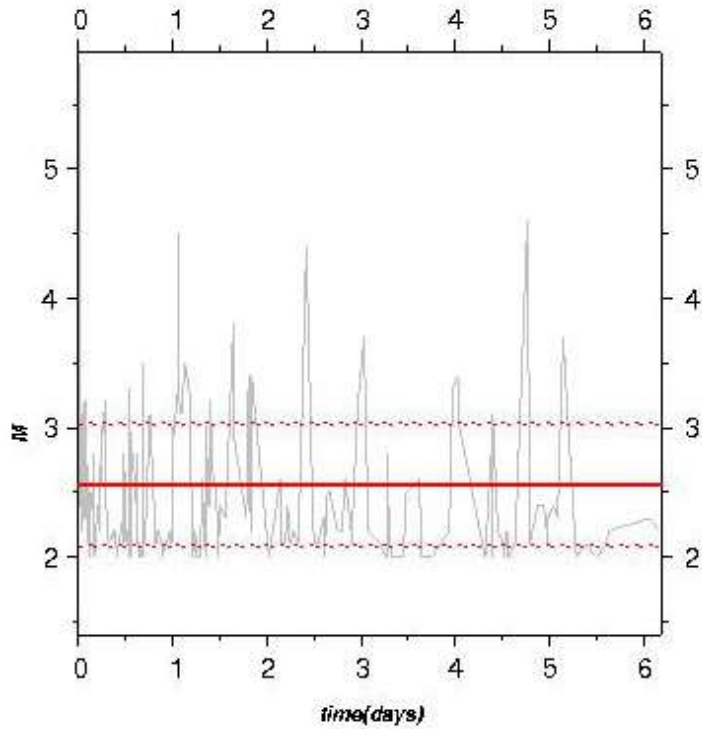
Ε. Τέζα

Μ. Σκορδύλης

G-R distribution



Mean magnitude



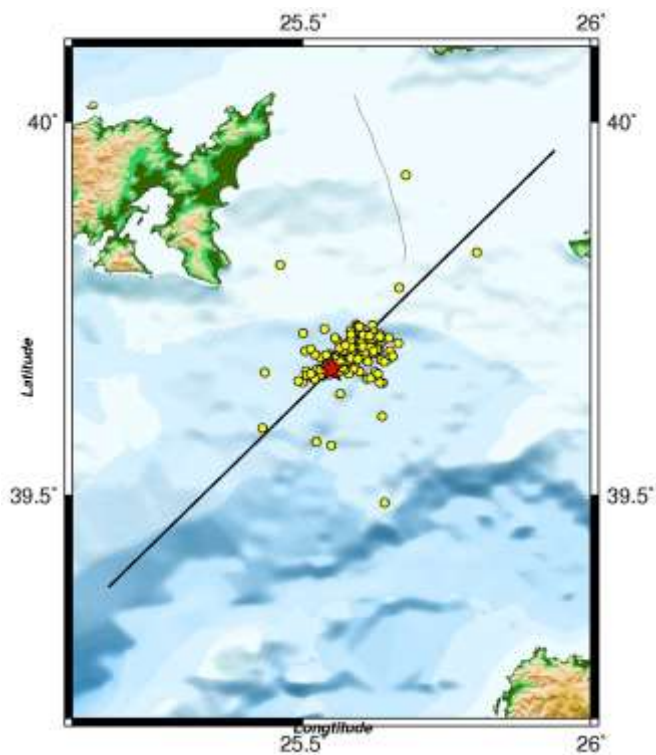
Mmean = 2.56

SD= 0.47

Mmean+SD = 3.03

Mmean-SD = 2.09

Seismicity map



Date: 08/01/2013

Time: 14:16:08

★ M = 5.9

Latitude = 39.6700

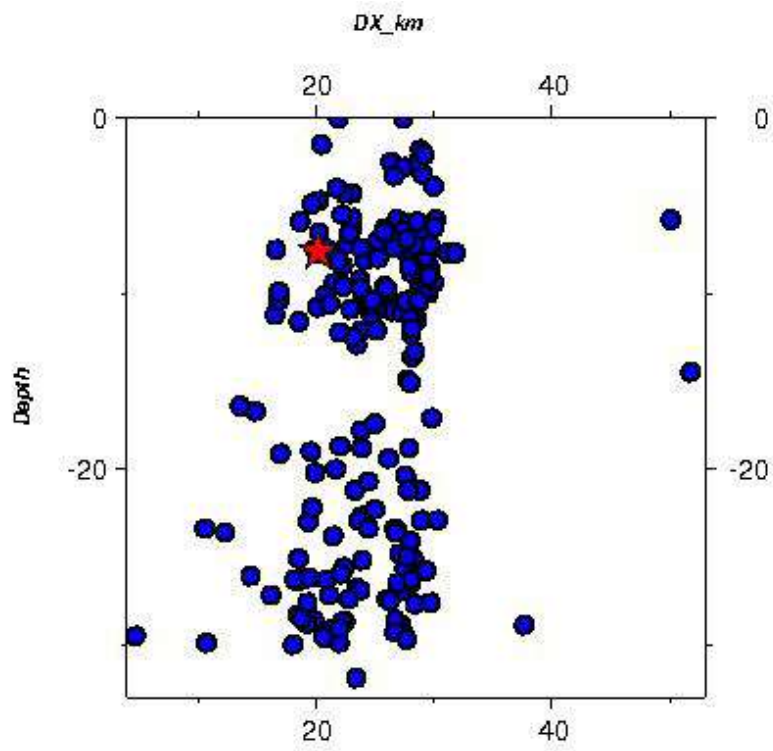
Longitude = 25.5500

Depth = 7.60 km

L (M)= 14.421 km

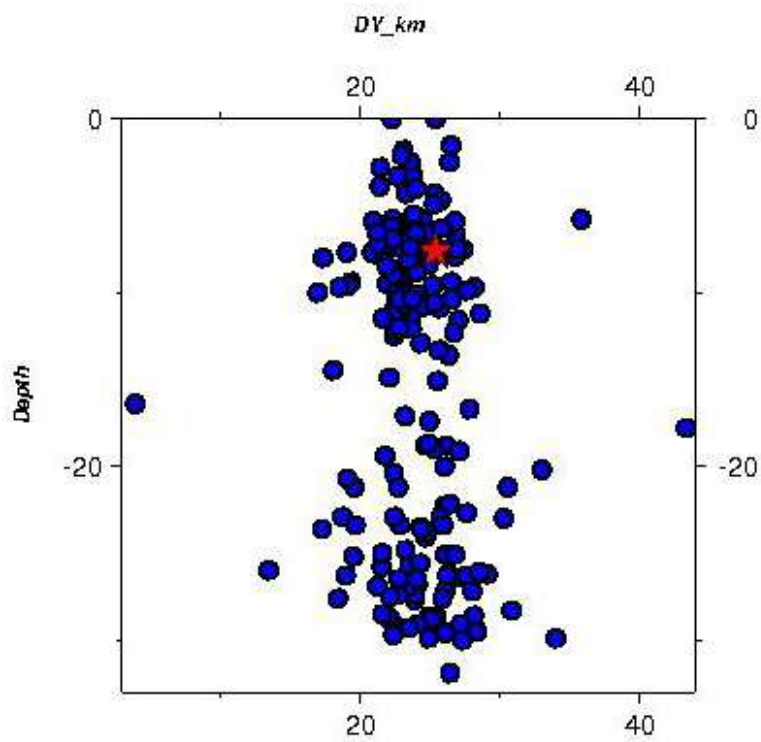
Azimuth = 45.51

Along-strike section



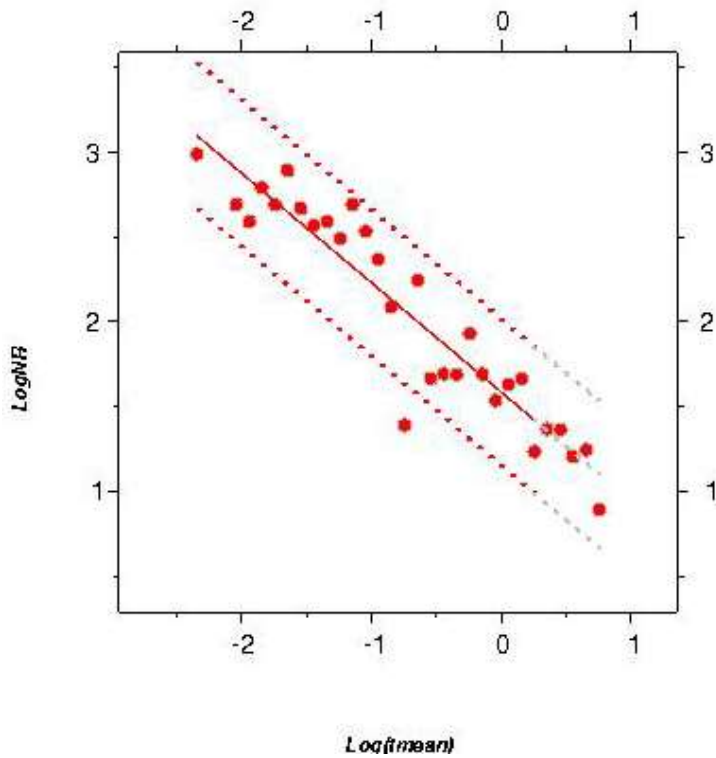
$\bar{L} \sim 13\text{km}$

Cross-strike section



Fault dip almost vertical

Time distribution



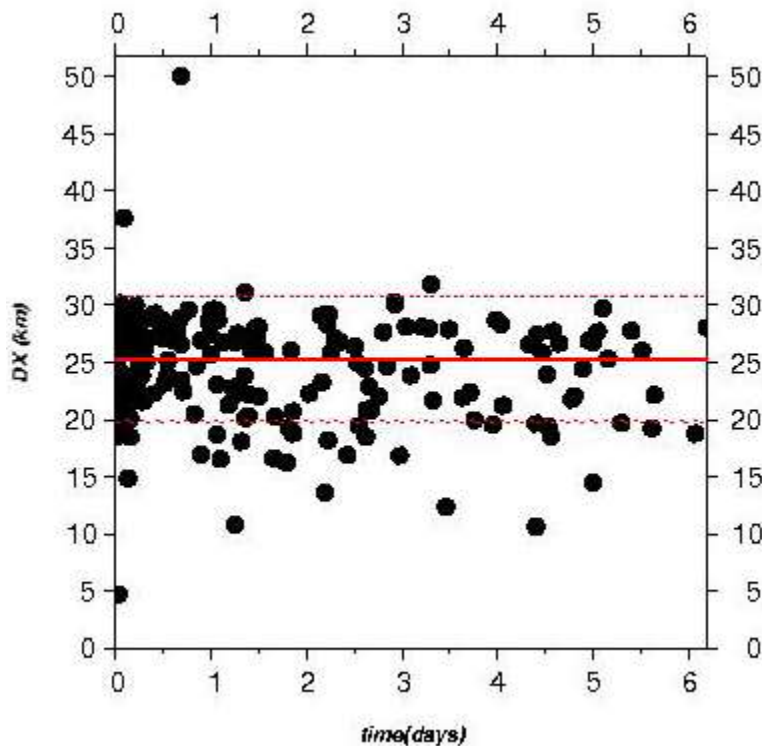
fit 48h: $y = -0.645 * x + 1.58$

fit 48h 95%

1st : $y_1 = -0.645 * x + 2.01$

2nd : $y_2 = -0.645 * x + 1.15$

Space-time distribution



Mean DX = 25.26 km

SD = 5.44 km

Mean DX + SD = 30.70 km

Mean DX - SD = 19.82 km

$L = 2 * \text{SD} = \sim 11 \text{ km}$

$L(M) = 14 \text{ km}$